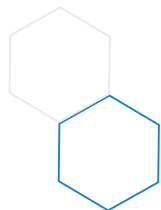


RGX

Modular Casework



RGX

Modular Casework Designed for Flexibility

The RGX system revolutionizes casework by offering a truly unique and innovative approach. Its modular and reconfigurable design sets a new standard for flexibility and adaptability in workspace solutions.



- **Effortless Reconfiguration:**
 RGX easily adapts to your evolving needs. Modify or expand your layout with minimal disruption, saving you time and money in the long run.
- **Seamless Integration:**
 Integrate RGX seamlessly with your existing furniture, creating a cohesive aesthetic.
- **Quick Installation:**
 Reduce installation from weeks to days with RGX's easy bolt-together system period after system.
- **Personalized Style:**
 Express your unique vision with a variety of work surface and front application options. Choose from steel, phenolic, and HPL/LPL to perfectly match your workplace design.
- **Built-in Functionality:**
 RGX doesn't compromise on functionality. It fully supports plumbing and electrical, just like traditional fixed casework.

Benefits



Flexibility to adapt to changing needs



Depreciates like furniture not buildings



Fast and efficient installation – hours vs days



Seamless integration with existing furniture



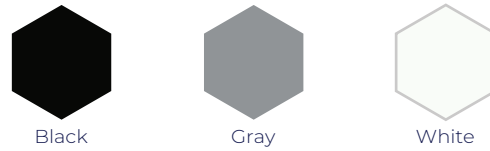
Designed and built in Austin, TX

Surface Options

Phenolic Resin Countertops



Epoxy Resin Countertops



High Pressure Laminate



Stainless Steel Countertops



Chemical Resistant Countertops

Please note that the comparisons mentioned here were compiled based on product information available from product brochures and manufacturer test results applying different chemicals. Formaspace did not perform any tests under similar conditions to compare the countertops listed below.

	EPOXY RESIN	PHENOLIC RESIN	COLORCORE PHENOLIC	STAINLESS STEEL
LAB APPLICATION	Heavy Duty	Moderate	Moderate	Moderate to Heavy Duty
CORROSIVE CHEMICAL RESISTANCE	High	Moderate	Moderate	Moderate
CARBON-BASED CHEMICAL RESISTANCE	High	Moderate	Moderate	High
TEMPERATURE RESISTANCE	High	Moderate	Moderate to High	High
LEAD TIME	Long	Moderate	Long than Others	Long
MATERIAL	Silica and Resin-Based	Paper and Resin Based	Paper and Resin Based	Stainless Steel
PRICE	●●●●●●●	●●●●●	●●●●●●●	●●●●●●●
SAMPLE ENVIRONMENTS	Chemical, Industrial	Medical, Clinical, Bio-Science	Medical, Clinical, Bio-Science	Food Service, Medical, Clinical

Finishes

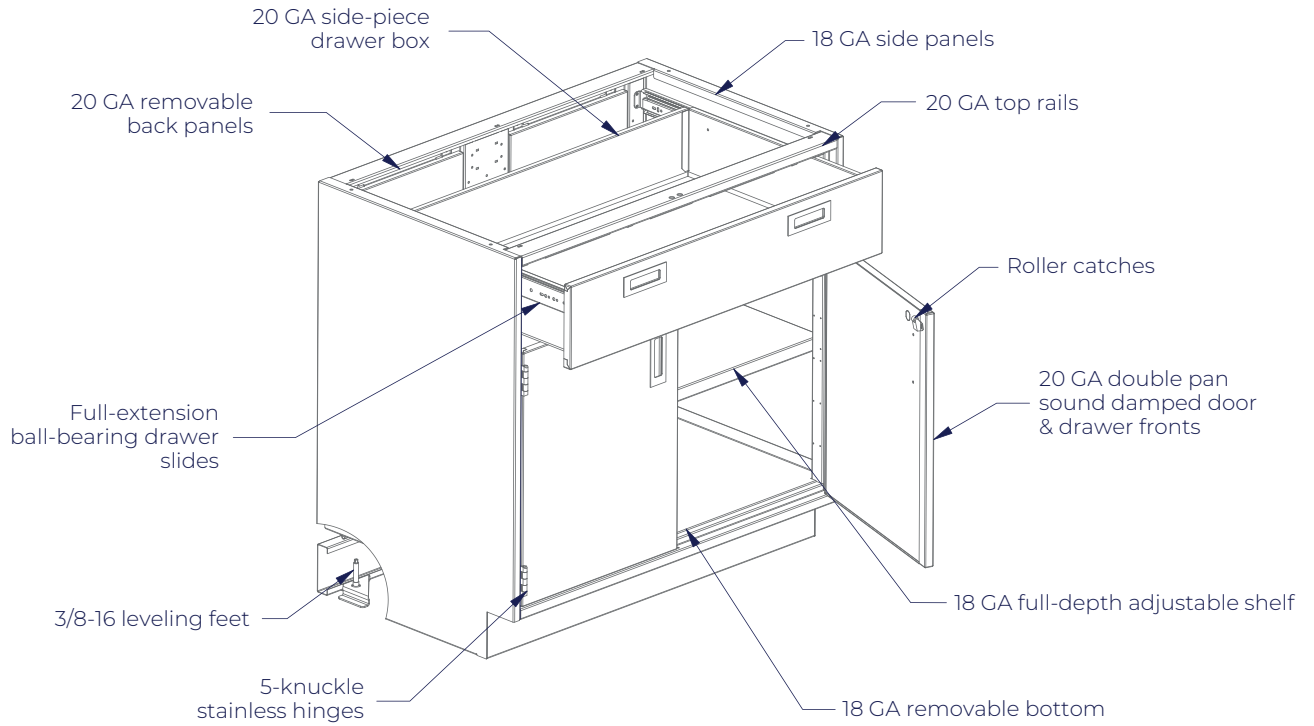
Powder Coat Finish Options for Frames

- | | | | | | | | |
|---|--|---|---|--|--|--|--|
| 
Black Semi Gloss
BK266 | 
Black Texture
BK59 | 
Steel Gray
Pearlescent
T028-GR02 | 
White Smooth
WH11 | 
White Texture
WH120 | 
Red
D01 | 
Light Ivory
RAL7045 | 
Almond
BG01 |
| 
Gray
RAL7045 | 
Light Gray
RAL7035 | 
Sparkle Silver
049/90450 | 
Sapphire Blue
RAL5003 | 
Traffic Blue
RAL5017 | 
Blue
RAL5012 | 
Light Neutral
HHS5-60021 | 
Custom
Provide us your
color values |

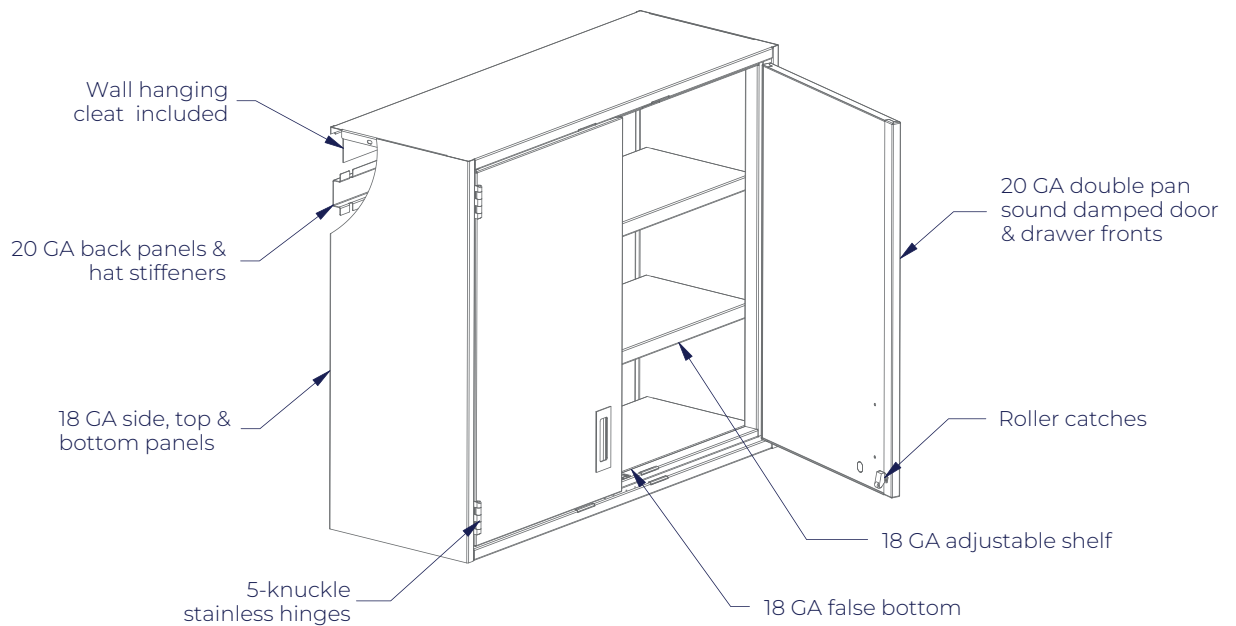


Specifications

Base Cabinets



Wall Cabinets



Model Number Key



- *F = File Drawer
- *S = Sink Unit
- *P = Panel
- *R = Right hinge facing cabinet
- *L = Left hinge facing cabinet

Base Cabinets

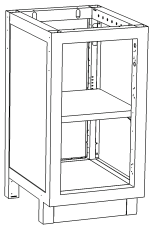
Our base cabinets offer dependable storage and ergonomic flexibility for laboratory and technical environments. Each unit features a standard 22-inch depth and is available in three (nominal) working heights: 35-inch standing height, 33-inch ADA-compliant height, and 29-inch sitting height.

Cabinets are available in widths from 18 to 48 inches in 6-inch increments and can be configured with drawers, doors, or a combination of both (see catalog listing for available combinations). Drawer units include full-extension slides for complete accessibility, while door units feature a standard adjustable shelf, with additional shelves available upon request. Door handing is customizable—left or right—and is determined by the hinge location.

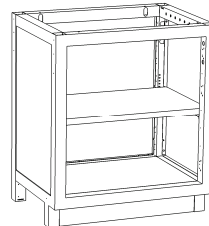
Base Cabinets - Standing Height

35" HIGH X 22" DEEP

Open Cabinets

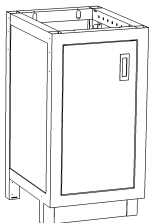


RGX-B3518-000
RGX-B3524-000



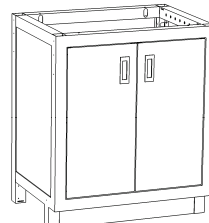
RGX-B3530-000
RGX-B3536-000
RGX-B3548-000
RGX-B3542-000

Cupboard Cabinets



Left Hinge
RGX-B3518-100L
RGX-B3524-100L

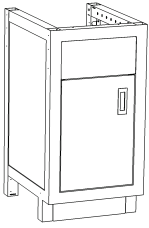
Right Hinge
RGX-B3518-100R
RGX-B3524-100R



RGX-B3530-200
RGX-B3536-200
RGX-B3542-200
RGX-B3548-200

Base Cabinets - Standing Height

Sink Cabinets

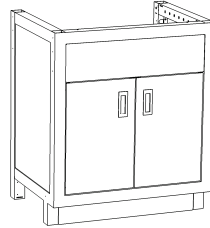


Left Hinge

RGX-B3518-10SL
RGX-B3524-10SL

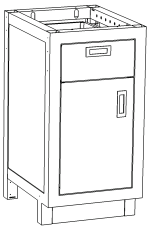
Right Hinge

RGX-B3518-10SR
RGX-B3524-10SR



RGX-B3530-20S
RGX-B3536-20S
RGX-B3542-20S
RGX-B3548-20S
RGX-B3558-20S

Door-Drawer Cabinets

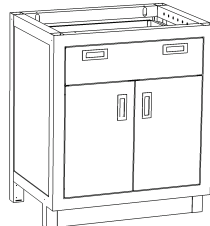


Left Hinge

RGX-B3518-110L
RGX-B3524-110L

Right Hinge

RGX-B3518-110R
RGX-B3524-110R

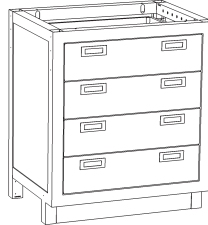


RGX-B3530-210
RGX-B3536-210
RGX-B3542-210
RGX-B3548-210

Drawer Cabinets



RGX-B3518-040
RGX-B3524-040



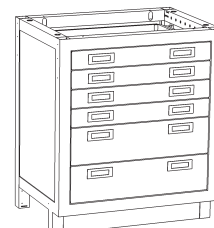
RGX-B3530-040
RGX-B3536-040
RGX-B3542-040
RGX-B3548-040



RGX-B3518-024
RGX-B3524-024



RGX-B3518-F12
RGX-B3524-F12



RGX-B3530-024
RGX-B3536-024
RGX-B3542-024
RGX-B3548-024



RGX-B3518-FF0
RGX-B3524-FF0

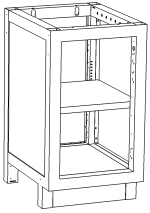


RGX-B3518-F20
RGX-B3524-F20

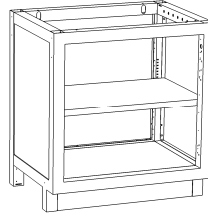
33" HIGH X 22" DEEP

Base Cabinets - ADA Height

Open Cabinets

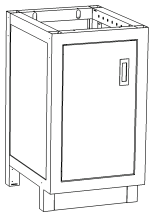


RGX-B3318-000
RGX-B3324-000

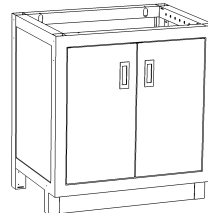


RGX-B3330-000
RGX-B3336-000
RGX-B3342-000
RGX-B3348-000

Cupboard Cabinets

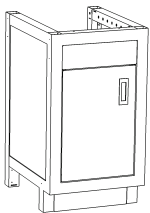


Left Hinge **Right Hinge**
RGX-B3318-100L RGX-B3318-100R
RGX-B3324-100L RGX-B3324-100R

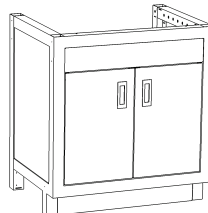


RGX-B3330-200
RGX-B3336-200
RGX-B3342-200
RGX-B3348-200

Sink Cabinets

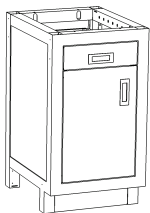


Left Hinge **Right Hinge**
RGX-B3318-10SL RGX-B3318-10SR
RGX-B3324-10SL RGX-B3324-10SR

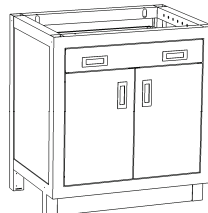


RGX-B3330-20S
RGX-B3336-20S
RGX-B3342-20S
RGX-B3348-20S
RGX-B3358-20S

Door-Drawer Cabinets



Left Hinge **Right Hinge**
RGX-B3318-101L RGX-B3318-101R
RGX-B3324-101L RGX-B3324-101R

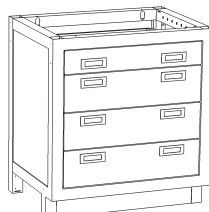


RGX-B3330-201
RGX-B3336-201
RGX-B3342-201
RGX-B3348-201

Drawer Cabinets



RGX-B3318-031
RGX-B3324-031



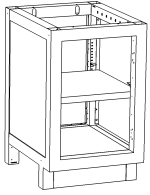
RGX-B3330-031
RGX-B3336-031
RGX-B3342-031
RGX-B3348-031



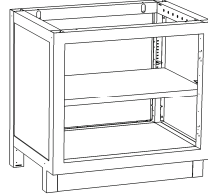
RGX-B3318-F11
RGX-B3324-F11

Base Cabinets - Sitting Height

Open Cabinets

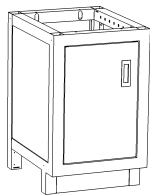


RGX-B2918-000
RGX-B2924-000

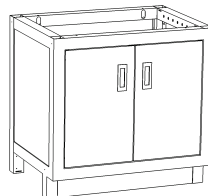


RGX-B2930-000
RGX-B2936-000
RGX-B2942-000
RGX-B2948-000

Cupboard Cabinets



Left Hinge **Right Hinge**
RGX-B2918-100L RGX-B2918-100R
RGX-B2924-100L RGX-B2924-100R

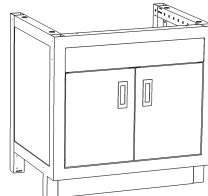


RGX-B2930-200
RGX-B2936-200
RGX-B2942-200
RGX-B2948-200

Sink Cabinets



Left Hinge **Right Hinge**
RGX-B2918-10SL RGX-B2918-10SR
RGX-B2924-10SL RGX-B2924-10SR

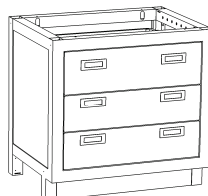


RGX-B2930-20S
RGX-B2936-20S
RGX-B2942-20S
RGX-B2948-20S

Drawer Cabinets



RGX-B2918-030
RGX-B2924-030

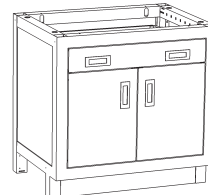


RGX-B2930-030
RGX-B2936-030
RGX-B2942-030
RGX-B2948-030

Door-Drawer Cabinets



Left Hinge **Right Hinge**
RGX-B2918-101L RGX-B2918-101R
RGX-B2924-101L RGX-B2924-101R



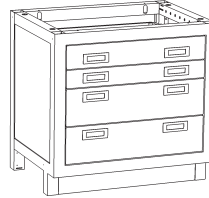
RGX-B2930-201
RGX-B2936-201
RGX-B2942-201
RGX-B2948-201

Base Cabinets - Sitting Height

Drawer Cabinets



RGX-B2918-022
RGX-B2924-022



RGX-B2930-022
RGX-B2936-022
RGX-B2942-022
RGX-B2948-022



RGX-B2918-F02
RGX-B2924-F02



RGX-B2918-F10
RGX-B2924-F10



Model Number Key



- *F = File Drawer
- *S = Sink Unit
- *P = Panel
- *R = Right hinge facing cabinet
- *L = Left hinge facing cabinet

Wall Cabinets

Our wall cabinets provide efficient overhead storage and are offered in heights of 24, 31, 36, and 48 inches, with widths ranging from 18 to 48 inches in 6-inch increments. All units are built at a standard 13-inch depth, with an optional 16-inch depth available (indicated by a "16" suffix in the model number, such as W2418-00016).

Each cabinet includes shelving based on height: one shelf in 24-inch units, two shelves in 31-inch units, and three shelves in 48-inch units. Additional shelves may be specified. Door handing for single-door units may be designated as left (L) or right (R), and 48-inch-high models incorporate three hinges per door for added stability.

Open Cabinets

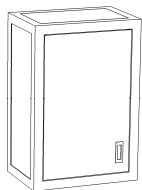


RGX-W2418-000 RGX-W3618-000
 RGX-W2424-000 RGX-W3624-000
 RGX-W3118-000 RGX-W4818-000
 RGX-W3124-000 RGX-W4824-000



RGX-W2430-000 RGX-W3142-000 RGX-W4830-000
 RGX-W2436-000 RGX-W3148-000 RGX-W4836-000
 RGX-W2442-000 RGX-W3630-000 RGX-W4842-000
 RGX-W2448-000 RGX-W3636-000 RGX-W4848-000
 RGX-W3130-000 RGX-W3642-000
 RGX-W3136-000 RGX-W3648-000

Cupboard Cabinets

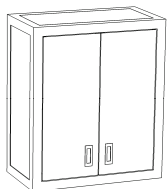


Left Hinge

RGX-W2418-1SHL RGX-W3618-1SHL
 RGX-W2424-1SHL RGX-W3624-1SHL
 RGX-W3118-1SHL RGX-W4818-1SHL
 RGX-W3124-1SHL RGX-W4824-1SHL

Right Hinge

RGX-W2418-1SHR RGX-W3618-1SHR
 RGX-W2424-1SHR RGX-W3624-1SHR
 RGX-W3118-1SHR RGX-W4818-1SHR
 RGX-W3124-1SHR RGX-W4824-1SHR



RGX-W2430-2SH RGX-W3142-2SH RGX-W4830-2SH
 RGX-W2436-2SH RGX-W3148-2SH RGX-W4836-2SH
 RGX-W2442-2SH RGX-W3630-2SH RGX-W4842-2SH
 RGX-W2448-2SH RGX-W3636-2SH RGX-W4848-2SH
 RGX-W3130-2SH RGX-W3642-2SH
 RGX-W3136-2SH RGX-W3648-2SH

Model Number Key



- *F = File Drawer
- *S = Sink Unit
- *P = Panel
- *R = Right hinge facing cabinet
- *L = Left hinge facing cabinet

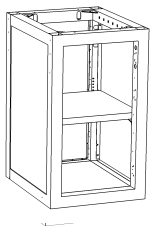
Hanging Base Cabinets

Our hanging base cabinets provide streamlined storage beneath the worksurface while preserving open legroom and maintaining an efficient workstation layout. Built with the same durable construction as our standard base cabinets, these units mount directly below the countertop for easy access.

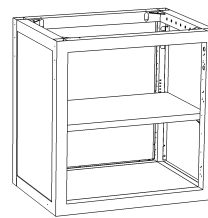
All hanging base cabinets feature a fixed 22-inch depth and are available in two working heights—25 inches and 31 inches—with widths ranging from 18 to 48 inches in 6-inch increments. Drawer units include full-extension slides for complete accessibility, while door units feature a standard adjustable shelf, with additional shelves available as needed. Door handing may be specified as left or right, determined by the hinge location.

Open Cabinets

31" HIGH X 22" DEEP



RGX-HB3118-000
RGX-HB3124-000



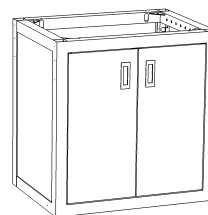
RGX-HB3130-000
RGX-HB3136-000
RGX-HB3142-000
RGX-HB3148-000

Cupboard Cabinets



Left Hinge
RGX-HB3118-100L
RGX-HB3124-100L

Right Hinge
RGX-HB3118-100R
RGX-HB3124-100R



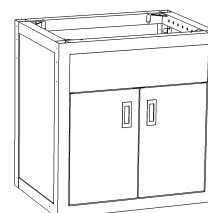
RGX-HB3130-200
RGX-HB3136-200
RGX-HB3142-200
RGX-HB3148-200

Sink Cabinets



Left Hinge
RGX-HB3118-10SL
RGX-HB3124-10SL

Right Hinge
RGX-HB3118-10SR
RGX-HB3124-10SR



RGX-HB3130-20S
RGX-HB3136-20S
RGX-HB3142-20S
RGX-HB3148-20S

Hanging Base Cabinets

Door-Drawer Cabinets

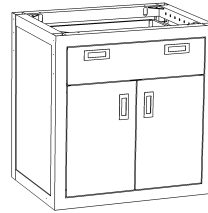


Left Hinge

RGX-HB3118-110L
RGX-HB3124-110L

Right Hinge

RGX-HB3118-110R
RGX-HB3124-110R



RGX-HB3130-210
RGX-HB3136-210
RGX-HB3142-210
RGX-HB3148-210

Drawer Cabinets



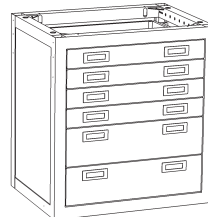
RGX-HB2518-030
RGX-HB2524-030



RGX-HB2530-030
RGX-HB2536-030
RGX-HB2542-030
RGX-HB2548-030



RGX-HB3118-024
RGX-HB3124-024



RGX-HB3130-024
RGX-HB3136-024
RGX-HB3142-024
RGX-HB3148-024



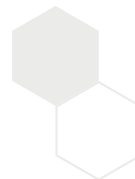
RGX-HB3118-F12
RGX-HB3124-F12



RGX-HB3118-F20
RGX-HB3124-F20



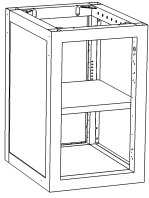
RGX-HB3118-FF0
RGX-HB3124-FF0



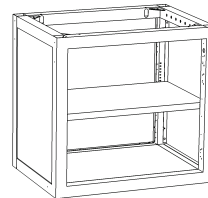
29" HIGH X 22" DEEP

Hanging Base Cabinets

Open Cabinets

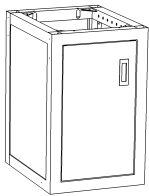


RGX-HB2918-000
RGX-HB2924-000



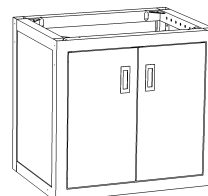
RGX-HB2930-000
RGX-HB2936-000
RGX-HB2942-000
RGX-HB2948-000

Cupboard Cabinets



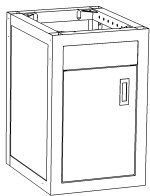
Left Hinge
RGX-HB2918-100L
RGX-HB2924-100L

Right Hinge
RGX-HB2918-100R
RGX-HB2924-100R



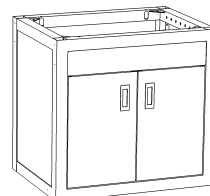
RGX-HB2930-200
RGX-HB2936-200
RGX-HB2942-200
RGX-HB2948-200

Sink Cabinets



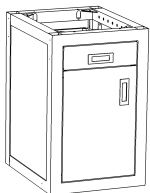
Left Hinge
RGX-HB2918-10SL
RGX-HB2924-10SL

Right Hinge
RGX-HB2918-10SR
RGX-HB2924-10SR



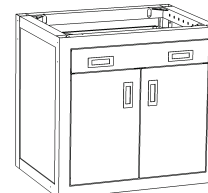
RGX-HB2930-20S
RGX-HB2936-20S
RGX-HB2942-20S
RGX-HB2948-20S

Door-Drawer Cabinets



Left Hinge
RGX-HB2918-110L
RGX-HB2924-110L

Right Hinge
RGX-HB2918-110R
RGX-HB2924-110R



RGX-HB2930-210
RGX-HB2936-210
RGX-HB2942-210
RGX-HB2948-210

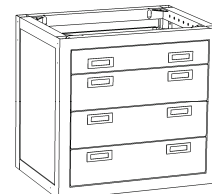
Drawer Cabinets



RGX-HB2918-031
RGX-HB2924-031



RGX-HB2918-F11
RGX-HB2924-F11

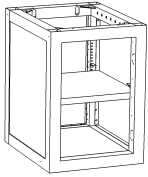


RGX-HB2930-031
RGX-HB2936-031
RGX-HB2942-031
RGX-HB2948-031

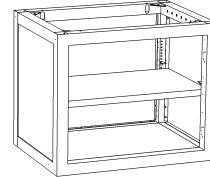
25" HIGH X 22" DEEP

Hanging Base Cabinets

Open Cabinets

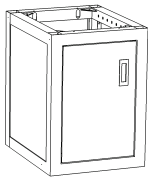


RGX-HB2518-000
RGX-HB2524-000



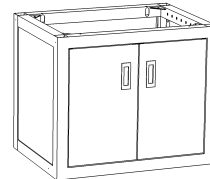
RGX-HB2530-000
RGX-HB2536-000
RGX-HB2542-000
RGX-HB2548-000

Cupboard Cabinets



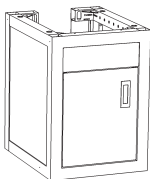
Left Hinge
RGX-HB2518-100L
RGX-HB2524-100L

Right Hinge
RGX-HB2518-100R
RGX-HB2524-100R



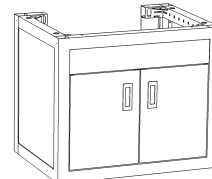
RGX-HB2530-200
RGX-HB2536-200
RGX-HB2542-200
RGX-HB2548-200

Sink Cabinets



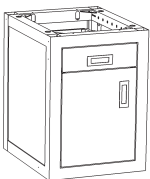
Left Hinge
RGX-HB2518-10SL
RGX-HB2524-10SL

Right Hinge
RGX-HB2518-10SR
RGX-HB2524-10SR



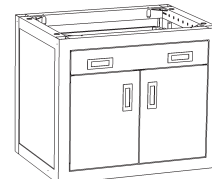
RGX-HB2530-20S
RGX-HB2536-20S
RGX-HB2542-20S
RGX-HB2548-20S

Door-Drawer Cabinets



Left Hinge
RGX-HB2518-101L
RGX-HB2524-101L

Right Hinge
RGX-HB2518-101R
RGX-HB2524-101R

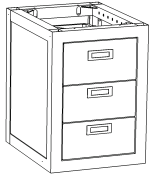


RGX-HB2530-201
RGX-HB2536-201
RGX-HB2542-201
RGX-HB2548-201

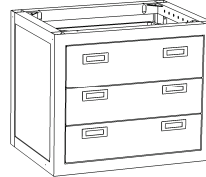
25" HIGH X 22" DEEP

Hanging Base Cabinets

Drawer Cabinets



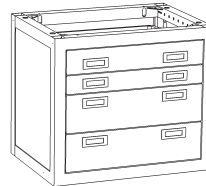
HB2518-030
HB2524-030



HB2530-030
HB2536-030
HB2542-030
HB2548-030



RGX-HB2518-022
RGX-HB2524-022



RGX-HB2530-022
RGX-HB2536-022
RGX-HB2542-022
RGX-HB2548-022



RGX-HB2518-F02
RGX-HB2524-F02



RGX-HB2518-F10
RGX-HB2524-F10



Accessories

Fronts

- Powder-coated steel (*Steel fronts match the frame color by default, but custom combinations are possible)
- Phenolic (0.75")
- Edge-banded laminate

Pulls

CRS (flush pulls only), 0.75" phenolic (wire pulls only), 0.75" lpl (wire pulls only)



Locks

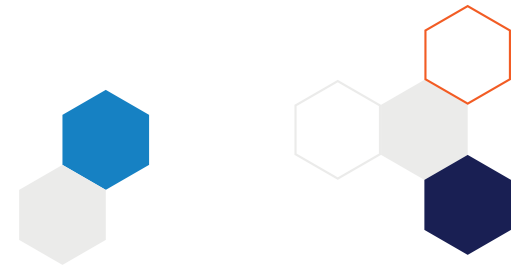
5 disc tumbler locks available for all drawers and doors in various key configurations (need picture)

Feet

Leveling feet

Accessories/Compatibility

ADA compliant knee panels and base cabinets available



Cabinet Heights

Nominal Versus Actual

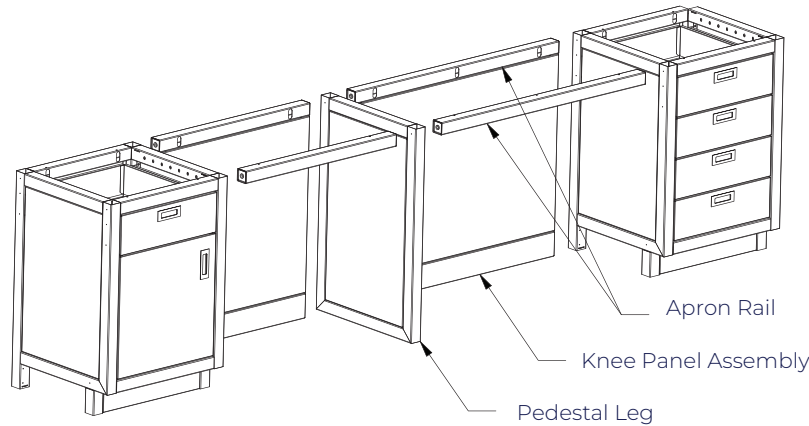
Base Cabinets		Hanging Base Cabinets		Wall Cabinets	
Nominal	Actual	Nominal	Actual	Nominal	Actual
35	34.75	31	30.75	24	24
33	32.5	29	28.5	31	30.75
29	28.875	25	24.875	36	36
				48	48

Accessories

Knee Spaces

RGX can create knee spaces using apron rails between cabinets and pedestal legs that will finish with knee panels. Apron rail and knee panel widths available in 1" increments from 18" to 54". Custom widths possible (custom widths are to be cut onsite).

RGX apron rails may be substituted with 4.5"H welded aprons from our standard casework catalog.



Apron Rails

Specify width "WW" in model number as shown below.

Model number: RGX-A02WW

Example: RGX-A0242

Knee Space Panels

Assembly includes kick base panel and removable wall panel. Select KSP height based on cabinet height and RGX or standard apron style.

KSP Assembly Heights		Selecting KSP Nominal Height	
Nominal	Actual	Apron	
24	24	RGX	FS STD
27	26.75	KSP27	KSP24
30	30	KSP30	KSP27
33	32.75	KSP33	KSP30

Cabinet Height

Specify height "HH" and width "WW" in model number as shown below.

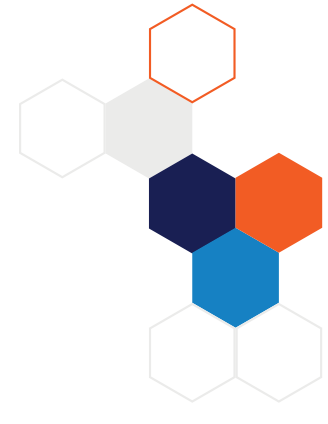
Model number: RGX-KSPHHWW

Example: RGX-KSP3342

Accessories

Pedestal Legs

- 2" tube steel frame with inset panels
- One panel is removable for access to levelers
- Legs may be fastened to the floor and wall



35" HIGH"

RGX-EP3502-28

RGX-EP3502-22

33" HIGH"

RGX-EP3302-28

RGX-EP3302-22

29" HIGH"

RGX-EP2902-28

RGX-EP2902-22







 **FORMASPACE**

 800.251.1505

 hello@formaspace.com

 formaspace.com

